

Answers: 8.1.2.10 Lab - Connect to a Router for the First Time

Introduction

In this lab, you will configure basic settings on a wireless router.

Recommended Equipment

- A computer with Windows installed
- An Ethernet NIC installed
- Wireless router
- Ethernet patch cable

Step 1: Connect the computer to the router.

- a. Ask the instructor for the following information that is used during the lab.

Router Address Information:

IP address:

Subnet mask:

Router name:

DHCP Server Setting Information:

Start IP address:

Maximum number of users:

Static DNS 1 (optional):

Router Access:

Router Password:

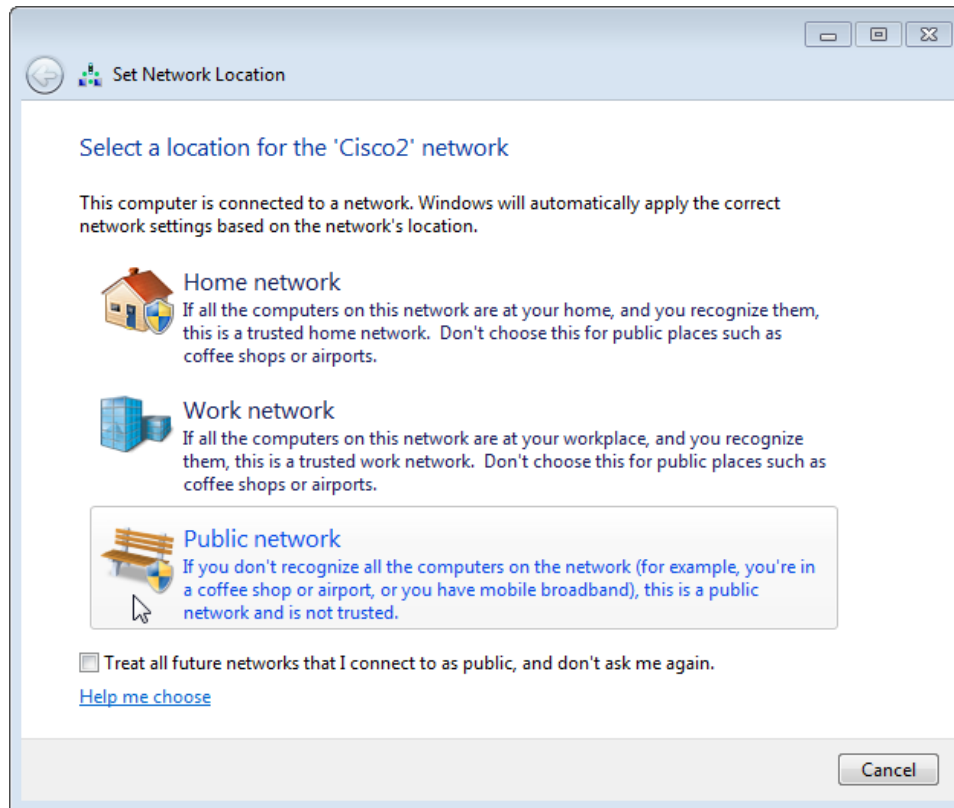
Note: Only use configurations assigned by the instructor.

- b. Plug in the power of the wireless router. Boot the computer and log in as an administrator.
- c. Connect the computer to one of the **Ethernet** ports on the wireless router with an Ethernet patch cable.

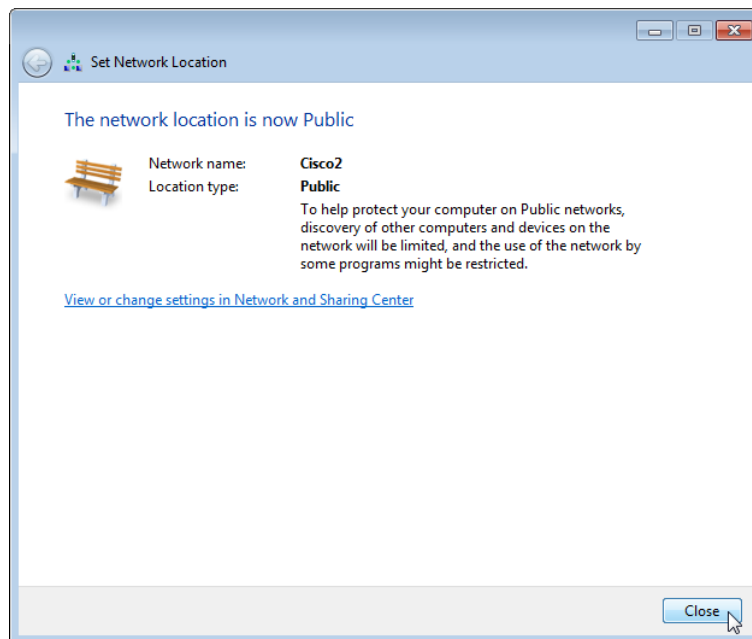
Note: If this is the first time connecting to the lab router, follow these instructions to set a network location. This will be explained later in the course.

Lab - Connect to a Router for the First Time

- d. In the **Set Network Location** window, select **Public network**.



- e. Click **Close** to accept the network location Public.



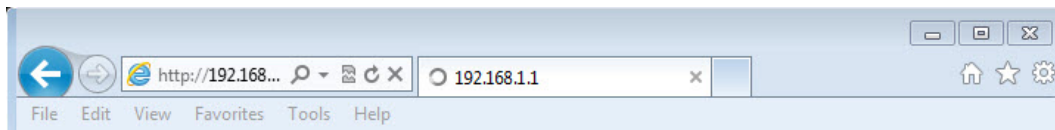
Lab - Connect to a Router for the First Time

- f. Open a command prompt and type **ipconfig /renew**.

What is the default gateway for the computer?

Step 2: Log in to the router.

- a. Open **Internet Explorer**. Type the IP address of your default gateway in the **Address** field, and then press **Enter**.

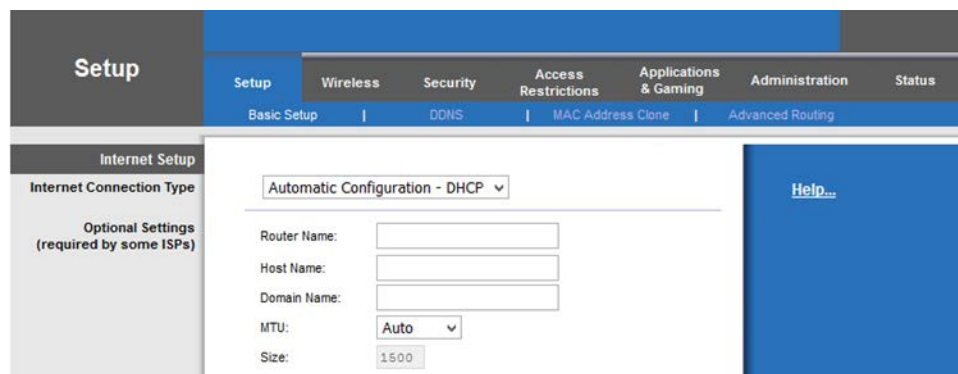


- b. In the **Windows Security** window, type **admin** in the **Password:** field then click **OK**.

Note: If this user name and password combination does not work, as your instructor or refer to the documentation of the router for the correct user name and password for your router.



- c. The **Setup** screen appears.



In the **Internet Setup** section, what is the **Internet Connection Type** assigned to the router?

- d. Make sure the **Internet Connection Type** is set to **Automatic Configuration – DHCP**.

Lab - Connect to a Router for the First Time

- e. Locate the **Network Setup** section. Verify that the **DHCP Server** is enabled.

Network Setup

Router IP

Local IP Address: 192 . 168 . 1 . 1

Subnet Mask: 255 . 255 . 255 . 0

DHCP Server: Enable Disable

Starting IP Address: 192.168.1.100

Maximum Number of DHCP Users: 50

Client Lease Time: 0 minutes (0 means one day)

Static DNS 1: 0 . 0 . 0 . 0

What is the Router IP address and the subnet mask?

Record the DHCP Server Settings:

Start IP Address:

Maximum Number:

IP Address Range:

- f. Enter the **Router Address** and **DHCP Server Setting** information provided by the instructor: **IP Address**, **Subnet Mask**, **Start IP Address**, and **Maximum Number of Users**.
- g. Click **Save Settings**.

Save Settings Cancel Changes

- h. The router may need to reboot at this time. If necessary, reboot the router and log back in.

Step 3: Find the IP address information of the computer.

- a. Open a command prompt.
- b. Type **ipconfig /all**, and record the following information.

Computer IP information:

IP address:

Subnet mask:

Gateway:

DNS (optional):

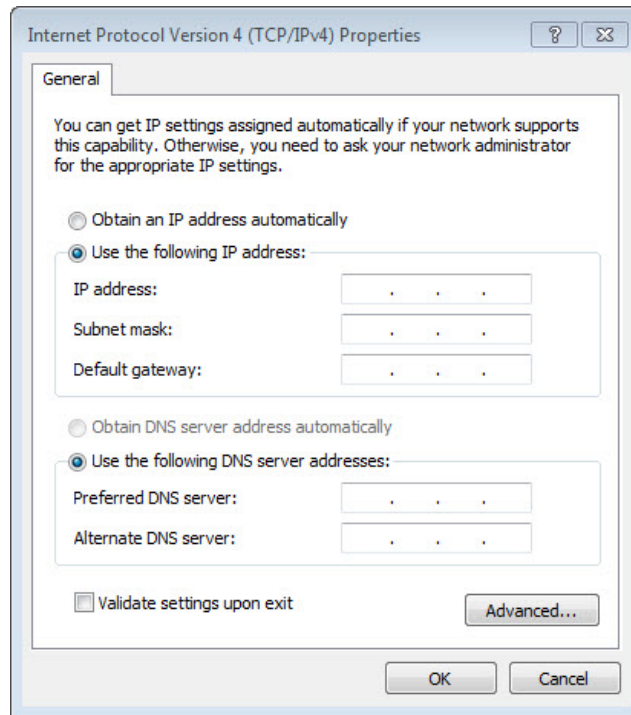
- c. Click **Start > Control Panel > Network and Sharing Center > Change adapter settings**.

Note: In Windows Vista, click **Start > Control Panel > Network and Sharing Center > Manage network connections**.

- d. In the **Network Connections** window, right-click the correct Ethernet adapter and select **Properties**. Click **Internet Protocol Version 4 (TCP/IPv4)** and select **Properties**.

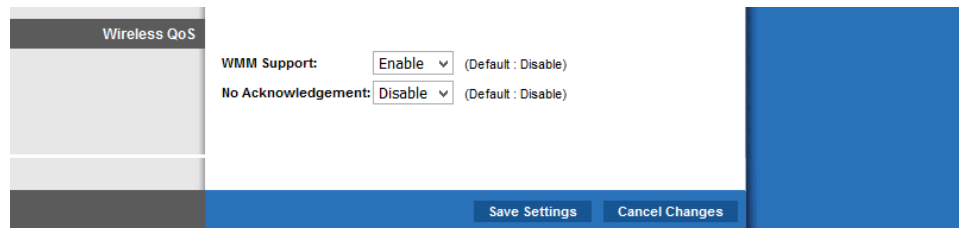
Lab - Connect to a Router for the First Time

- e. Use the recorded information to configure the NIC with static IP information. Click **OK**, and click **Close**.



Step 4: Change QoS settings.

- a. Click the **Applications& Gaming** tab and then select **QoS**.
- b. Make sure **WMM Support** is enabled. Click **Save Settings > Continue**, if any changes were made.



Step 5: Change router password.

- a. Click the **Administration** tab and then select **Management**.

Lab - Connect to a Router for the First Time

- b. Type **Network** in the Router **Password:** and **Re-enter to confirm:** fields.

The screenshot shows the 'Administration' page of a router. The 'Router Password' section is active, displaying fields for 'Password:' and 'Re-enter to confirm:'. Below these are sections for 'Web Access' (with 'Access Server' set to HTTP and 'Wireless Access Web' set to Enable), 'Remote Router Access' (with 'Remote Management' set to Disable and 'Management Port' set to 8080), and 'UPnP' (set to Enable). At the bottom, there are 'Save Settings' and 'Cancel Changes' buttons.

- c. Click **Save Settings > Continue**.
- d. Log back into the router using the new IP address and password.
What IP address did you enter into the URL field of the browser?

What password did you use to access the router GUI?

Step 6: Reset the router to the original configuration.

- a. Unless stated otherwise by the instructor, restore the router back to factory default if the option is available.

The screenshot shows the 'Administration' page of a router. The 'Factory Defaults' section is active, displaying a 'Restore Factory Defaults:' option with radio buttons for 'Yes' (selected) and 'No'. At the bottom, there are 'Save Settings' and 'Cancel Changes' buttons.

Lab - Connect to a Router for the First Time

If default restoration is not available, return the configurations to the following settings or settings provided by the instructor.

Router Address Information:

- o IP address: 192.168.1.1
- o Subnet mask: 255.255.255.0
- o Router name: Router

DHCP Server Setting Information:

- o Start IP address: 192.168.1.100
- o Maximum number of users:.. 50
- o Static DNS 1 (optional): 0.0.0.0 or leave it blank

Router Access:

- o Router Password: Admin
- b. Navigate to the **Internet Protocol Version 4 (TCP/IPv4) Properties** window on the computer. Select **Obtain an IP address automatically** and **Obtain DNS server address automatically**. Click **OK**, and click **Close**.
 - c. Close the browser, log off the computer, and turn off the router.